

# R̄. Ave, Maria

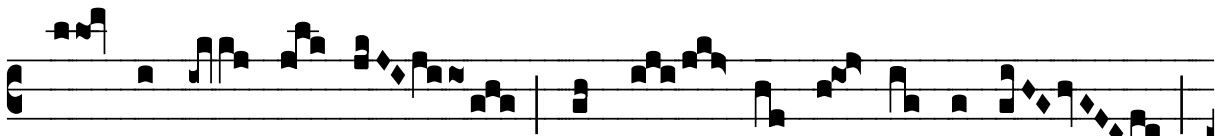
|      |      |      |    |   |   |
|------|------|------|----|---|---|
| H 16 |      |      |    |   |   |
| Mode | 7003 | Rom1 | 4r |   |   |
| CAO  | 6157 | Rom2 | 3v |   |   |
|      | G    | B    | E  | M | V |
| H    | R    | D    | F  | S |   |

Lc 1,28.35 Ț Ps 23,7

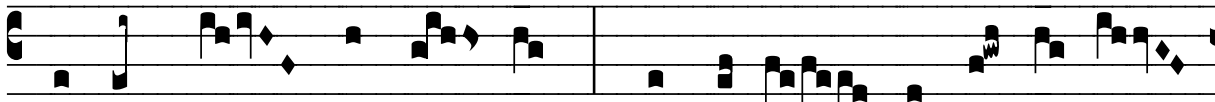
R̄. VII   
**A** Ve, Ma-rí- a, grá-ti- a ple- na,



Dó- mi- nus te- cum. Spí- ri- tus Sanctus super-



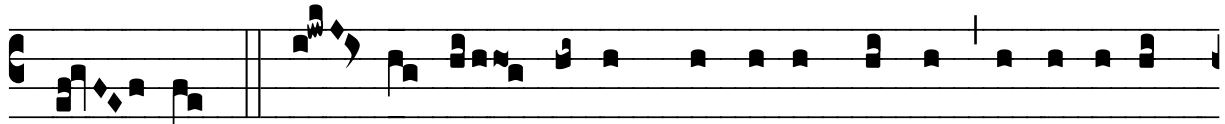
vé- ni- et in te, et vir- tus Al- tís-simi



ob-umbrá- bit ti- bi ; quod e- nim ex te na- scé-



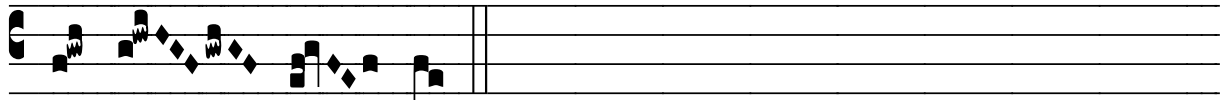
tur Sanctum vocá- bi- tur \* Fí- li- us



De- i.  $\checkmark$ . Tól- li- te portas, prínci-pes vestras , et e- levá-



mi-ni portæ æ-terná- les, et intro- í- bit. \* Fí-



li- us De- i.