

# ℞. Constantes estote

H 42					
Mode	8010	Rom1	23r		
CAO	6328	Rom2	20v		
C	G	B	E	M	V
H	R	D	F	S	L

2 Par 20,17 ℣. Is 26,19

℞. VIII

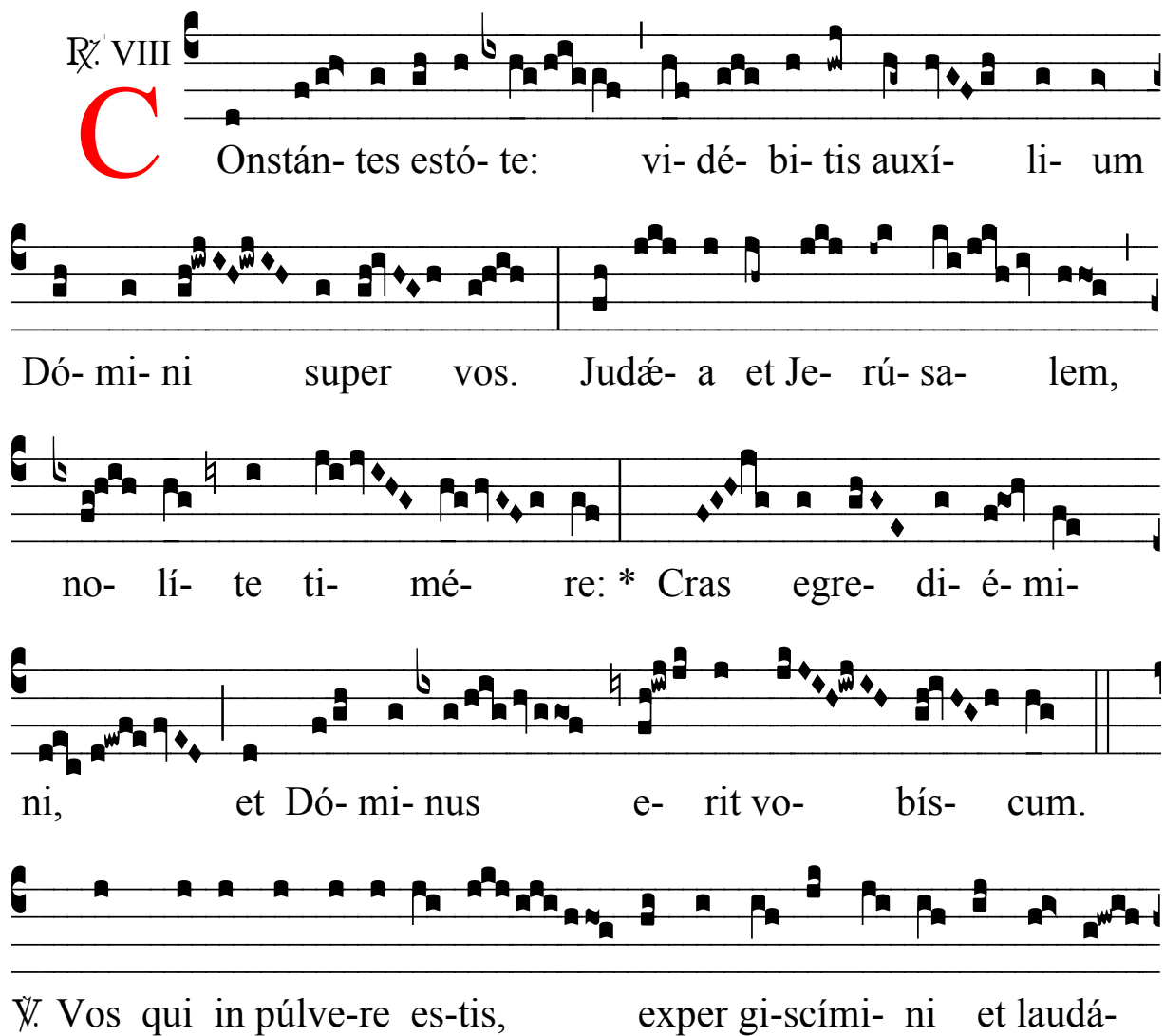
**C** Onstán- tes estó- te: vi- dé- bi- tis auxí- li- um

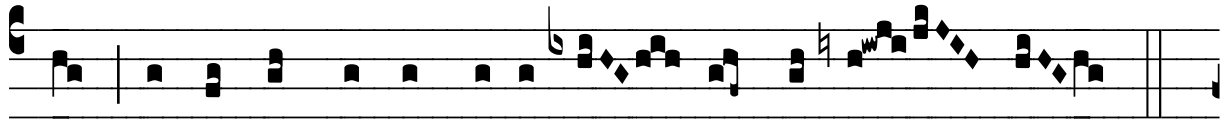
Dó- mi- ni super vos. Judá- a et Je- rú- sa- lem,

no- lí- te ti- mé- re: \* Cras egre- di- é- mi-

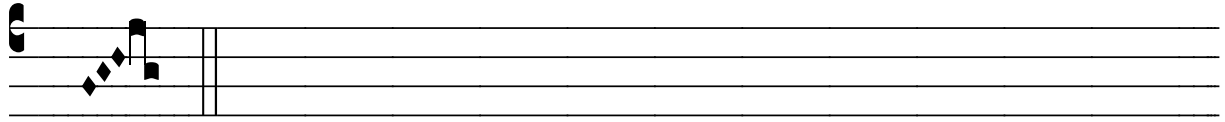
ni, et Dó- mi- nus e- rit vo- bís- cum.

℣. Vos qui in púlve-re es-tis, exper gi-scími- ni et laudá-





te: ecce Dó- mi- nus vé- ni- et cum sa- lú- te.



\* Cras.