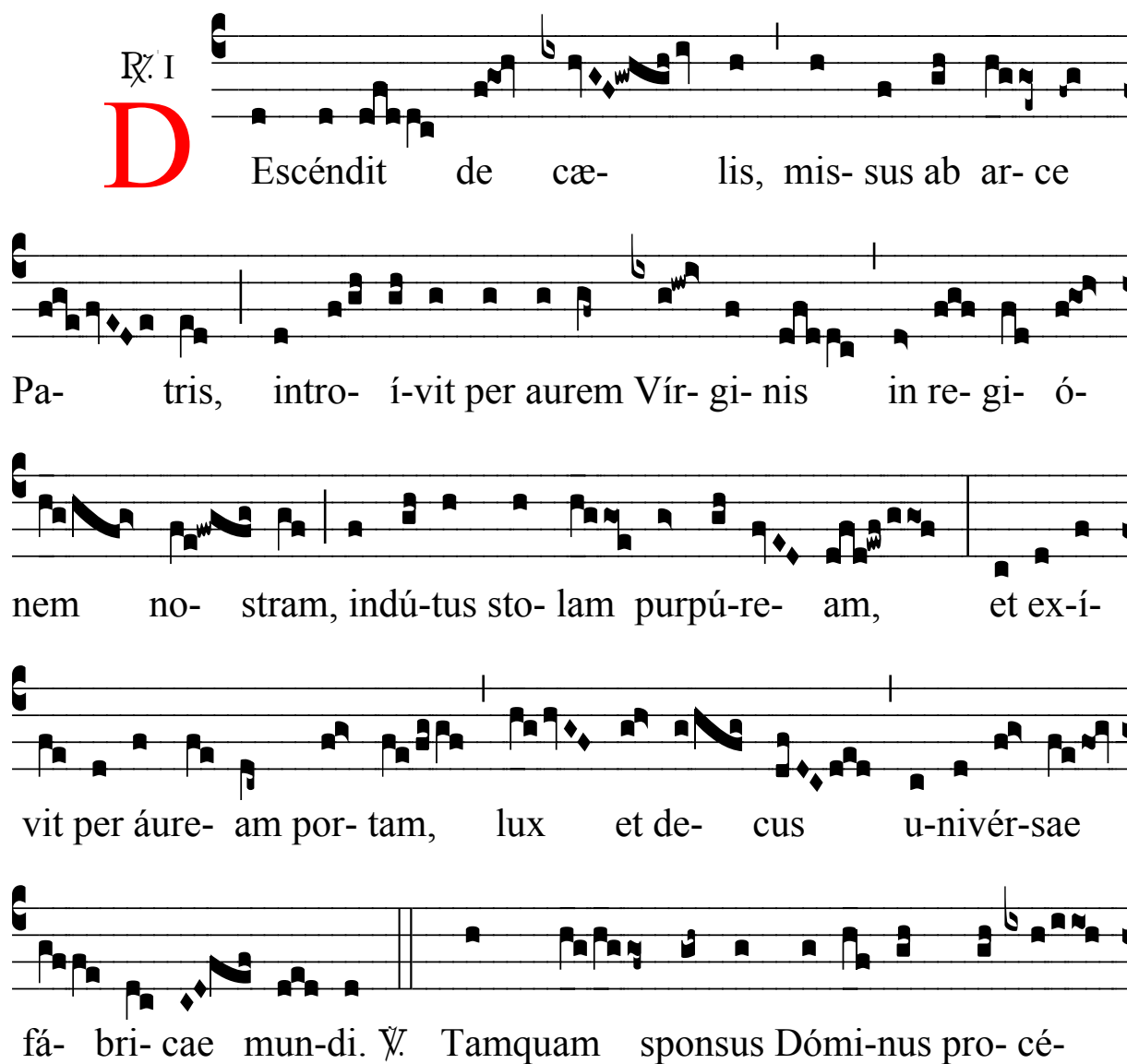


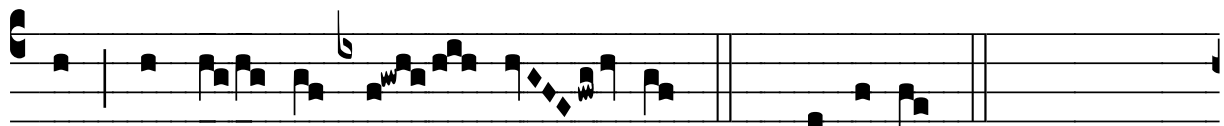
℞. Descendit de cælis

H 45					
Mode	1009	Rom1	26r		
CAO	6411	Rom2	22v		
C	G	B	E	M	V
H	R	D	F	S	

℣. Ps 18,6

℞. I
D Escéndit de cæ- lis, mis- sus ab ar- ce
Pa- tris, intro- í-vit per aurem Vír- gi- nis in re- gi- ó-
nem no- stram, indú-tus sto- lam purpú-re- am, et ex-í-
vit per áure- am por- tam, lux et de- cus u-nivér-sae
fá- bri- cae mun-di. ℣. Tamquam sponsus Dómi-nus pro- cé-





dens de thá- la- mo su- o. * Et ex-í-vit.



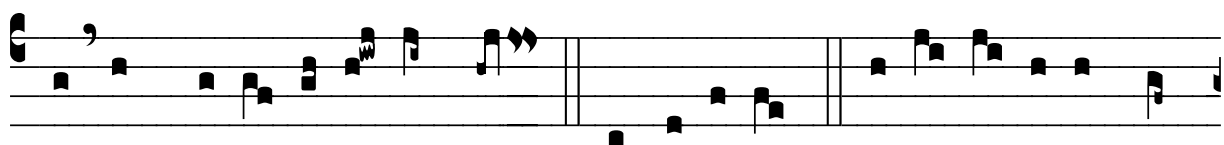
∩ Tam- quam sponsus Dómi- nus



pro-cé- dens de thá- la- mo su- o. *Et ex- í- vit.



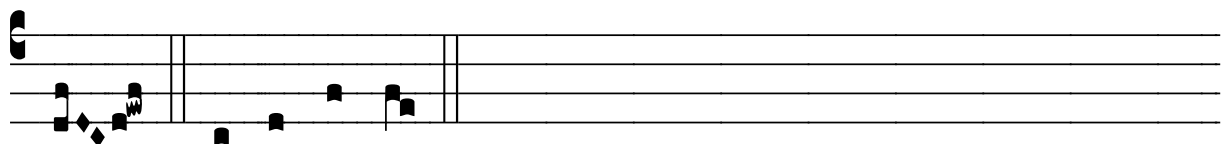
∩ Gló- ri- a Patri, et Fí- li-



o, et Spi- rí- tu- i Sancto. * Et exí-vit ∩ Sicut e- rat in prin-



cí-pi- o, et nunc, et sem- per, et in sáecu- la sæcu- ló- rum. A-



men. * Et ex- í- vit.