


R̃. In illo die suscipiam

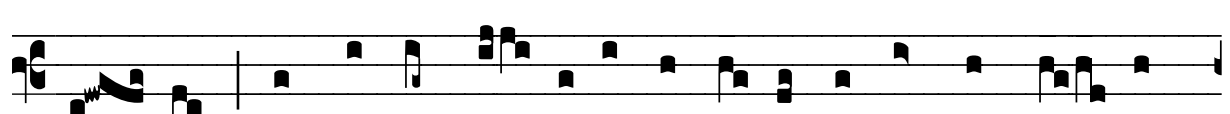
H 61					
Mode	8017	Rom1		0	
CAO	6906	Rom2		29v	
C	G	B	E	M	V
H	R	D	F	S	L

Ag 2, 24 Ṽ. Ps 80, 8

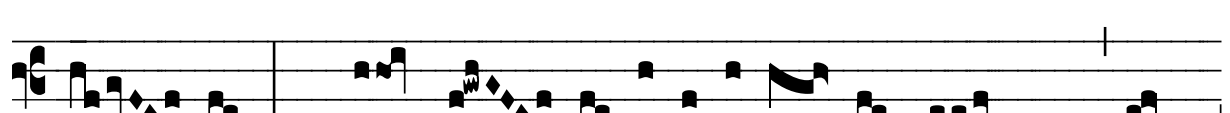
R̃. VIII



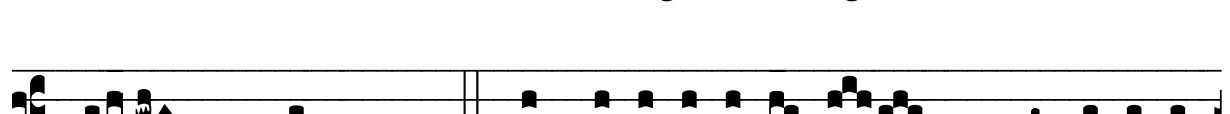
I N il- lo di- e suscí- pi- am te, servum



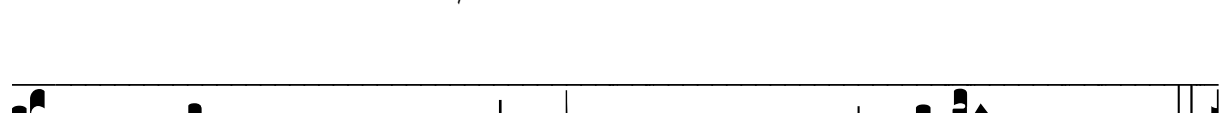
me- um, et po-nam te sic-ut signá- cu-lum in conspéc- tu



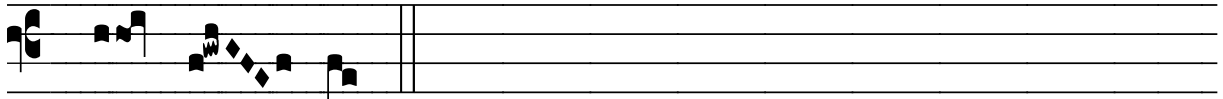
me- o, * Quó- ni- am ego e-lé- gi te, di-



cit Dómi- nus. Ṽ. In tri-bu-la-ti- ó-ne invocá-sti



me et exau- dí- vi te, et li- be- rá- vi te.



* Quó- ni- am