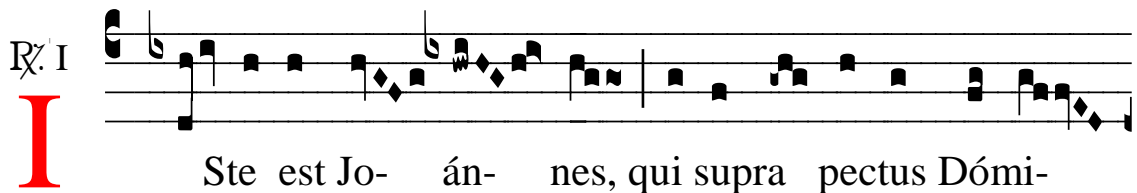


# R̄. Iste est Joannes

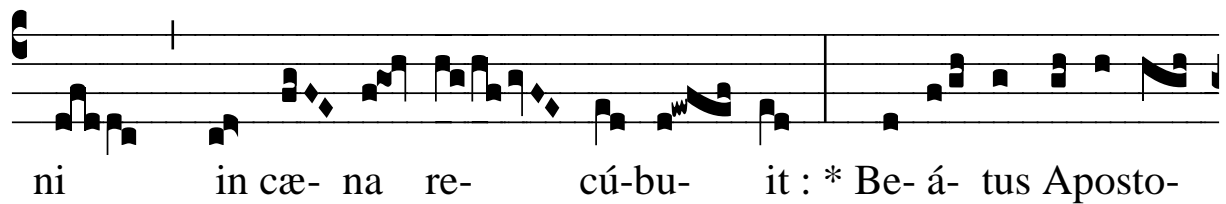
H 63					
Mode	1012	Rom1	0		
CAO	7001	Rom2	0		
C	G	B	E	M	V
H	R	D	F	S	L

Ÿ Jo 13,25

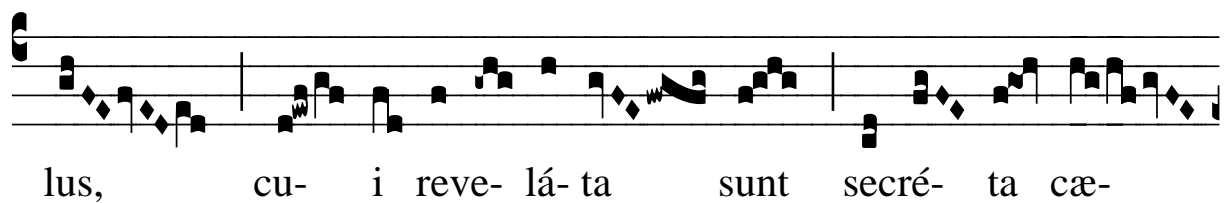
R̄. I **I** Ste est Jo- án- nes, qui supra pectus Dómi-



ni in cæ- na re- cú- bu- it : \* Be- á- tus Aposto-



lus, cu- i reve- lá- ta sunt secré- ta cæ-

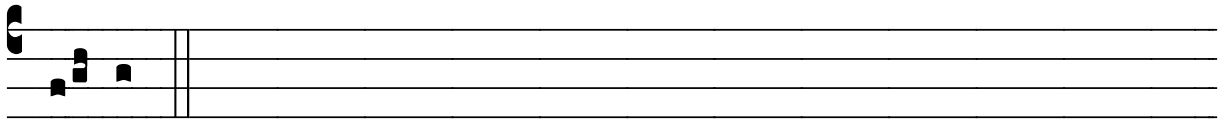


lé- sti- a. Ÿ. Val- de hono- rándus est be- á- tus Jo- án- nes,



qui supra pectus Dómi- ni in cæna re- cú- bu- it.\* Be-





á- tus.