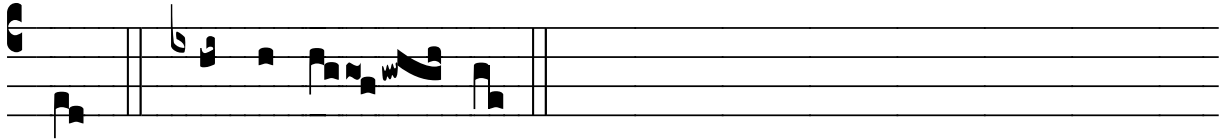


# ℞. Fiat manus tua

H 85			
Mode	4018	Rom1	0
CAO	6731	Rom2	0
		E	
H	R		S

Ps 118, 173 Ṽ. Id, 176

℞. IV  
**F** I- at ma- nus tu- a ut salvum me fá-  
ci- at, qui- a mandá- ta tu- a e- lé- gi ; \* Concu-  
pí- vi sa- lu- tá- re tuum Dó- mi- ne.  
Ṽ. Errá- vi sic-ut ovis quæ per- í- e- rat ; requí- re servum  
tu- um, Dómi- ne, qui- a mandá- ta tu- a non sum ob- lí-



tus. \* Concu-pí- vi.