

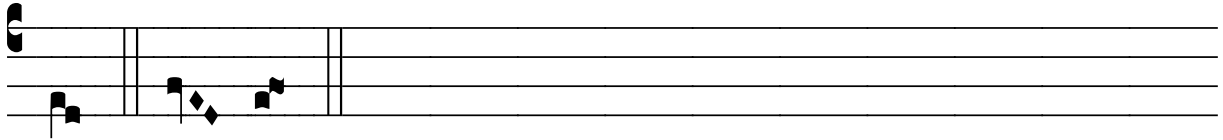
R̃. Confitebor tibi Domine

H 88					
Mode	4020	Rom1	53v		
CAO	6317	Rom2	46r		
	G	B	E		V
H	R	D	F	S	L

Ps 85, 12-13 Ț. Id., 13

R̃. IV

C Onfi- té- bor ti- bi, Dó- mi- ne De- us, in to-
to cor- de me- o, et ho- no-ri- fi- cá- bo no-
men tu- um in æ- tér- num : * Qui- a mi- se- ri- cór- di- a
tu- a, Dómi- ne, magna est super me. Ț. Et e-ri-pu-
í-sti á-nimam me- am ex inférno in- fe-ri- ó-



ri. * Qui- a.