

# R̄. Cum inducerent puerum Jesum

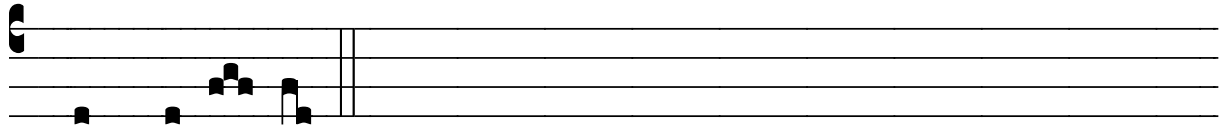
H 119					
Mode	1029	Rom1	0		
CAO	6367	Rom2	0		
			E		V
H	R	D	F		L

Lc 2, 27-29 V̄. Id., 30

R̄. I  
**C** Um indú- ce- rent pú- e- rum Je- sum pa- rén- tes  
e- jus, accé- pit e- um Síme- on in ul- nas su-  
as, et bene- dí- xit De- um et di- xit : \* Nunc dimít-  
tis, Dó- mi- ne, ser- vum tu- um in pa- ce.  
V̄. Qui- a vi- dé- runt ó- cu- li me- i sa- lu- tá- re tu- um, quod



pa- rá-sti ante fá-ci- em ómni- um po- pu- ló- rum.



\* Nunc dimít- tis.