


# ℞. Mutato etenim

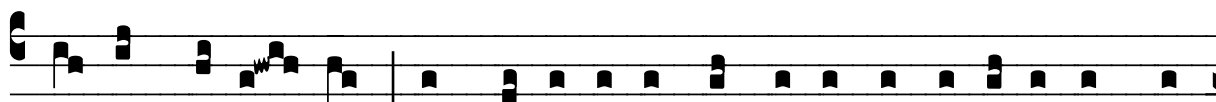
		H 125			
Mode	8041	Rom1	0		
CAO	7193	Rom2	0		
		B			
H	R				L

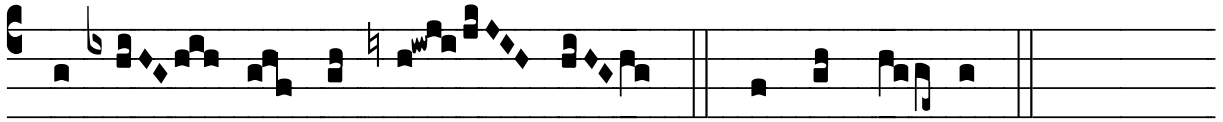
℞. VIII   
**M** U-tá- to ét- e-nim sæcu-lá- ri há-bi- tu, be-

  
á- tus Gregó-ri- us monasté-ri- um pé-ti- it, \* Et

  
ex hu- jus mun- di naufrá- gi- o nu- dus e-

  
vá- sit. ⅴ. Qui ante sé-ri-co et gemmis mi-cánti-bus or-

  
ná- tus procés- sit , post vi- li tectus tégmi-ne pauper ipse pau-pé-



ri- bus mi- ni- strá- bat. \* Et ex hu- jus.