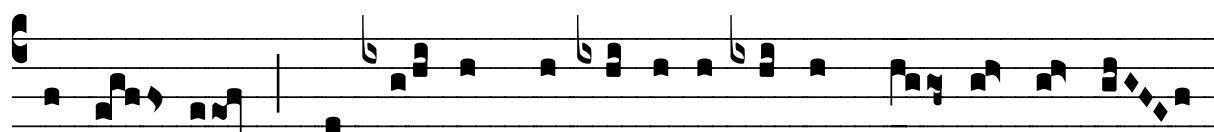


# ℞. Eodem vero anno

H 131					
Mode	4031	Rom1	0		
CAO	6659	Rom2	0		
C					
H	R	D	F	S	

℞. IV

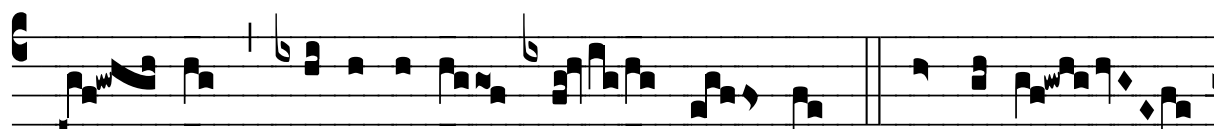
**E**



i- tú- rus, \* Qui- bús-dam di-scí-pu-lis se-cum con-ver-sán-ti-



bus, qui-búsdam longe manén- ti-bus sanctís- simi su- i ób-



i- tus denunti- á- vit di- em. Ǟ. Indi-cans



namque discípu- lis qua-le e- is signum fí- e- ret, quando e-jus á-

