

# R̃ Alleluia fac cum servo tuo

H 0					
Mode	9999	Rom1	0		
CAO	6072	Rom2	0		
C	G		E		V
			S		

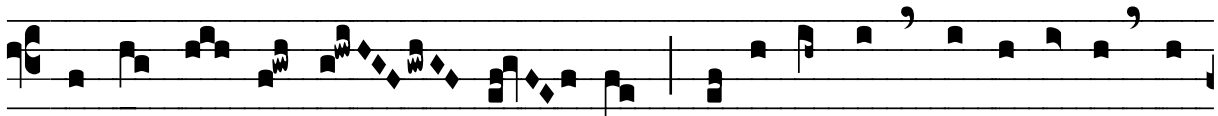
Ps 118, 124 *Ÿ. Id., 125*

R̃ II

**A**



L- le-lú- ia ! Fac cum servo tu- o secún- dum



mi- ra- bí- li- a tu- a, \* Alle-lú- ia, al-le-lú- ia, al-



le- lú- ia. *Ÿ. Ser- vus tu- us sum e-go, da mi- hi in-tel-*



léc- tum ut discam man- dá- ta tu- a. \* Alle-lú- ia.