

# ℞ Immisit Dominus soporem

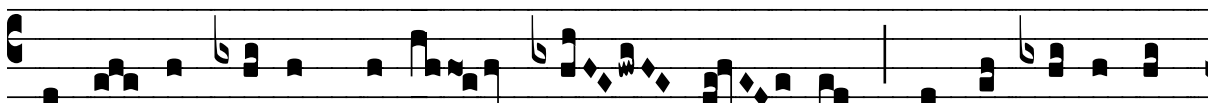
H 137					
Mode	5021	Rom1	66r		
CAO	6883	Rom2	0		
C	G	B	E	M	V
H	R	D	F	S	L

Gen 2, 21 ℞ Id., 23

℞ V  
**I** Mmí-sit Dó- mi- nus so-pó- rem in A- dam,



et tu- lit unam de co- stis e- jus: et æ- di- fi- cá-



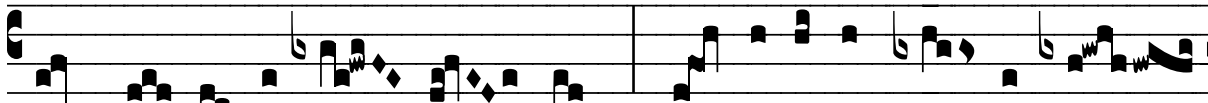
vit co-stam, quam tú-le-rat Dómi-nus de Adam, in mu-lí- e-

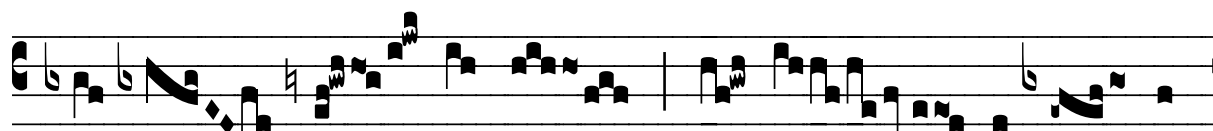


rem, et ad- dú-xit e- am ad A- dam, ut vi-dé-



ret quid vo-cá-ret e- am : \* Et vocá-vit no- men e-





jus Vir- á- go, qui- a de vi- ro



su- o sum- pta est.  $\forall$  Hoc nunc os ex ós-si-bus



me- is, et ca-ro de carne me- a. \* Et vocá-vit.