

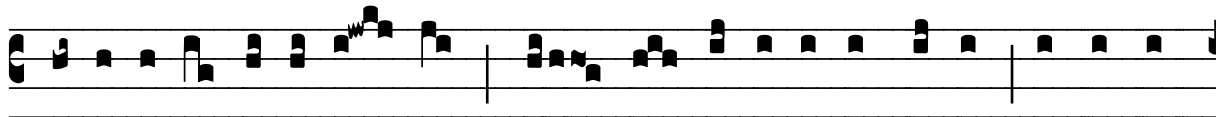
# R̄. Ubi est Abel frater tuus

H 138					
Mode	7043	Rom1	67r		
CAO	7804	Rom2	0		
C	G	B	E	M	V
H	R	D	F	S	L

Gn 4, 9-10 V̄. Id., 11

R̄. VII

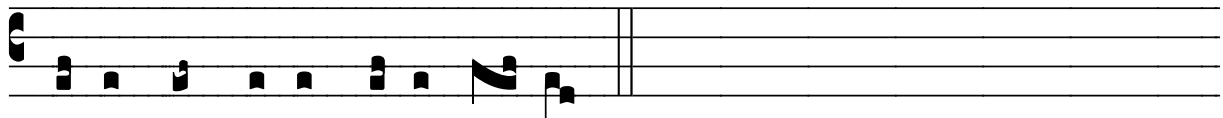
**U** Bi est Abel fra- ter tu- us, di-xit Dó- mi-  
nus ad Ca- in. Né- sci- o, Dómi-ne, numquid  
cu- stos fratris me- i sum e- go ? Et di-xit ad e- um :  
Quid fe- cí- sti ? \* Ecce vox sánqui-nis fratris tu- i Abel  
cla- mat ad me de ter- ra. V̄. Ma-le-díc- ta



terra in ó-pe-re tu- o, quæ a- pé-ru- it os su- um, et suscé-



pit sánguinem fra-tris tu- i de ma-nu tu- a. \* Ec-



ce vox sángui-nis fratris tu- i.