

℞. Ductus est Jesus in desertum

H 145					
Mode	7046	Rom1	0		
CAO	6529	Rom2	0		
		B			
H	R	D	F	S	

Mt 4, 1.3 ℞. *Id.*, 2

℞. VII

D

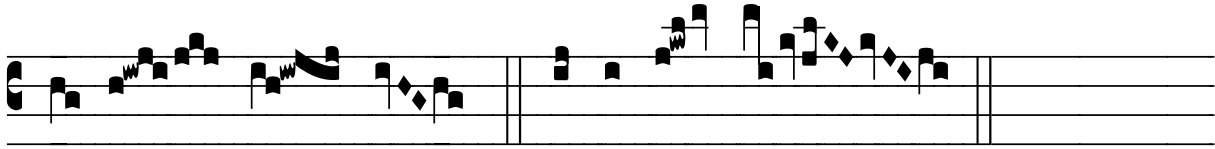
uctus est Je-sus in de- sér- tum a Spí- ri- tu,

ut tenta-ré-tur a di- á-bo- lo ; * Et accé- dens ten-

tá- tor, di- xit e- i : Si fí- li- us De- i es, dic ut lá-

pi-des i- sti panes fi- ant. ℞. Et cum je- ju-nás-

set quadra-gínta di- ébus et quadra- gínta nócti- bus, póste- a



e- sú- ri- it. * Et accé- dens.