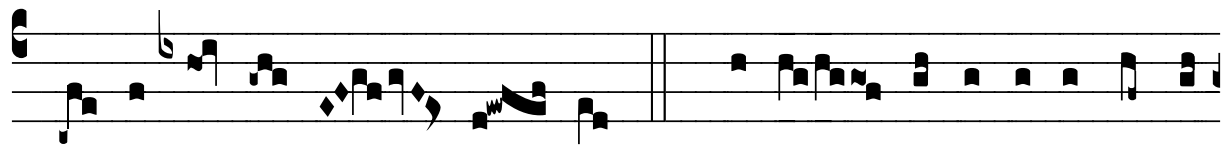


R̄. Si Dominus Deus meus

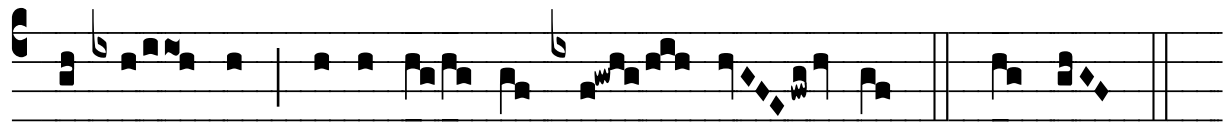
H 150					
Mode	1040	Rom1		75r	
CAO	7650	Rom2		0	
C	G	B	E	M	V
H	R	D	F	S	L

Gn 28, 20-22 V̄. Id., 16

R̄. I
S I Dómi-nus De-us me- us fú- e- rit me-cum in
vi- a i-sta qua e- go ámbu- lo, et custo-dí-
e- rit me, et déde- rit mi-hi pa-nem ad edén- dum, et ve-
sti-mén-tum quo o- pé- ri- ar, et re-vocá-ve- rit me cum
sa-lú- te, * E- rit mi- hi Dómi-nus in re-fú- gi- um, et



la- pis i- ste in si- gnum. ✠ Ve- re Dómi- nus est in lo-



co i- sto, et e- go ne- sci- é- bam. * E- rit.