

℞. Erit mihi Dominus in Deum

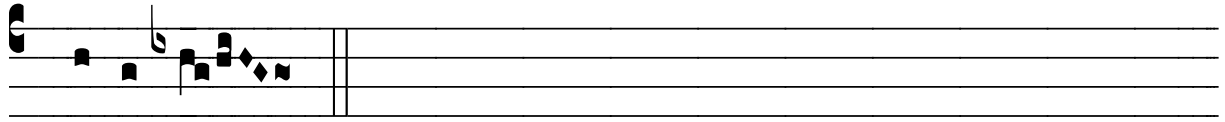
H 150					
Mode	1041	Rom1	75v		
CAO	6668	Rom2	0		
C	G	B	E	M	V
H	R	D	F	S	L

Gn 28, 21-22 √ Id., 20

℞. I
Erit mi- hi Dómi-nus in De- um, et la-
pis i- ste quem e- ré-xi in tí- tu- lum vo- cá- bi- tur do- mus
De- i; et de u- ni- vér- sis quæ dé- de- ris mi-
hi, * Dé- ci- mas et hósti- as pa- cí- fi- cas óffe- ram
ti- bi. √ Si Dómi- nus De- us me- us fú- e- rit mecum in vi- a



i-sta qua e-go ámbu- lo et custo- dí- e- rit me.



* Dé-ci-mas.