


℞. Locutus est Dominus ad Moysen

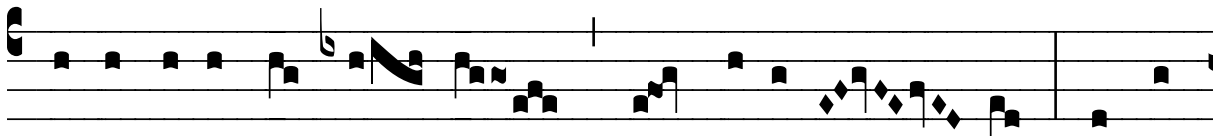
H 159					
Mode	4035	Rom1	82r		
CAO	7098	Rom2	0		
C	G	B	E	M	V
H	R	D	F	S	L

Ex 7, 14 √ Id., 3, 7


℞. IV



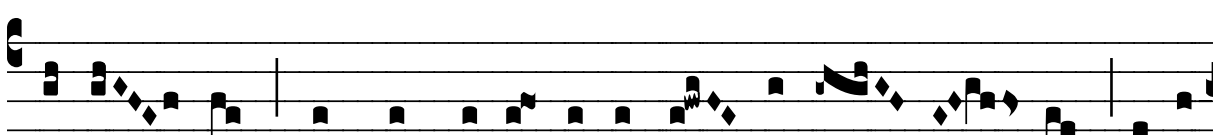
L Ocú- tus est Dó- minus ad Moysen, di- cens :



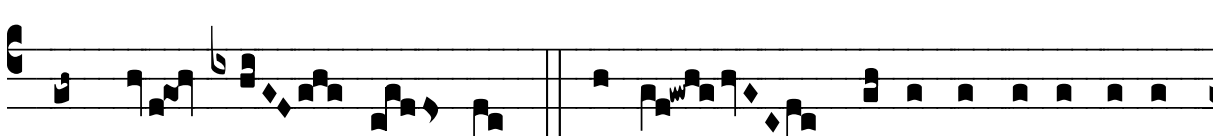
Descénde in Æ- gý- ptum, dic Pha- ra- ó- ni ut di-



mít- tat pó- pu- lum me- um, * Indu- rá- tum est cor Pha-



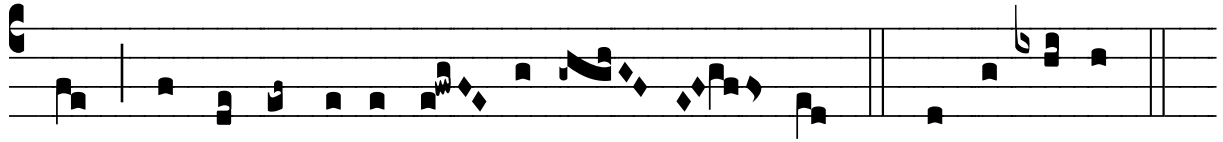
ra- ó- nis : non vult dimít- te- re pó- pu- lum me- um ni- si



in ma- nu for- ti. √ Vi- dens vi- di afflicti- ónem



pópu- li me- i qui est in Æ-gýpto, et gémi- tum e- jus audí-



vi, et descéndi li-be- rá-re e- os. * Indu- rá-tum.