

R̄. Deus meus es tu ne

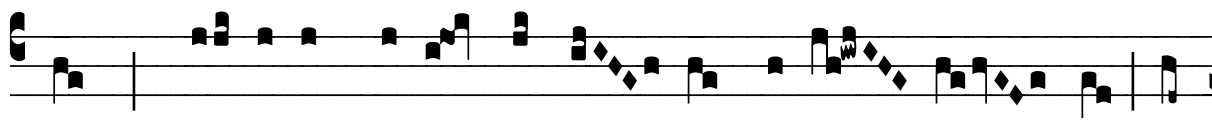
H 165					
Mode	8064	Rom1	86v		
CAO	6428	Rom2	57v		
C	G	B	E	M	V
H	R	D	F	S	L

Ps 21, 11 *Ÿ Id., 2*

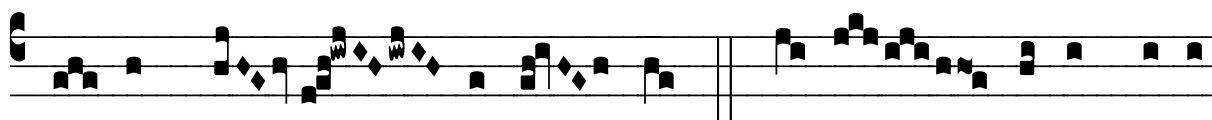


D

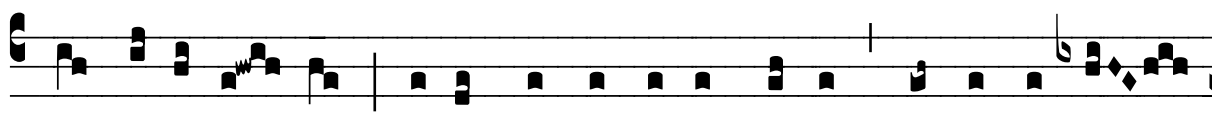
E- us me- us es tu, ne discé- das a



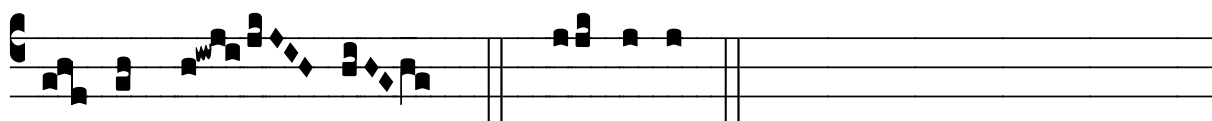
me : * Quó- ni- am tribu- lá- ti- o próxi- ma est, et



non est qui ádju- vet. *Ÿ* De- us, De- us me-us,



ré-spi-ce in me, qua-re me de-re-li-quí-sti ? longe a sa-



lú- te me- a. * Quó- ni- am.