

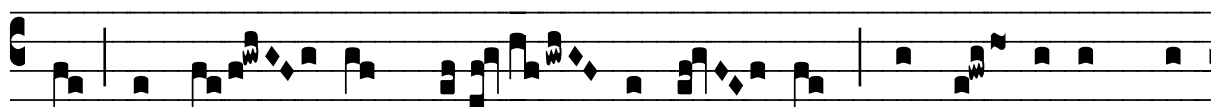
℞. In proximo est

H 166					
Mode	7061	Rom1	0		
CAO	6931	Rom2	0		
C	G	B	E	M	V
H	R	D	F	S	L

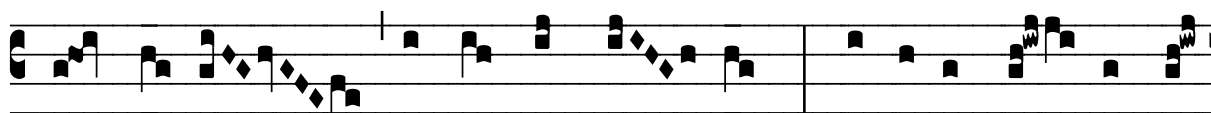
Ps 21, 11.17.21 ℞. Id., 2



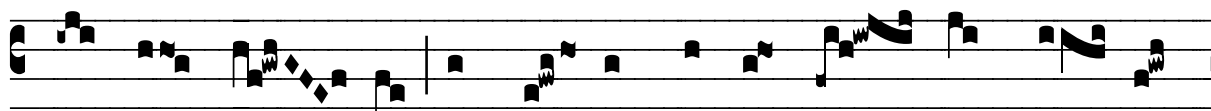
I N próxi-mo est tri-bu-lá-ti-o me-a, Dó-mi-



ne, et non est qui ádju-vet; ut fó-di-ant ma-



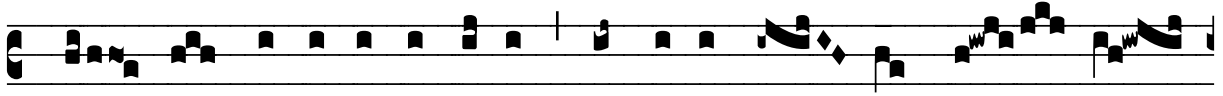
nus me-as et pe-des me-os: * Lí-be-ra me de o-



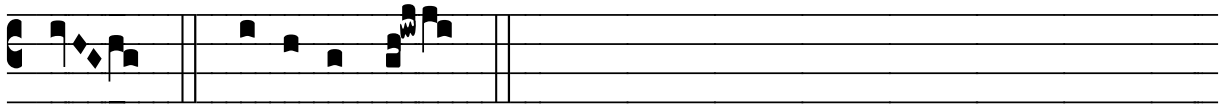
re le-ó-nis, ut nar-rem nomen tu-um frá-tri-



bus me-is. ℞. De us, De-us me-us, ré-spi-ce in me,



qua- re me de-re- liquísti, longe a sa- lú- te me-



a. * Líbe-ra me.