


R̄. Salvum me fac Deus


H 171					
Mode	8070	Rom1	90r		
CAO	7566	Rom2	60v		
C	G	B	E	M	V
H	R	D	F	S	

Ps 68, 2.18 Ṽ. *Id.*, 19


R̄. VIII



S Al- vum me fac, De- us, quóni- am in- tra- vé- runt



a- quæ usque ad á- ni- mam me- am; ne a- vér-



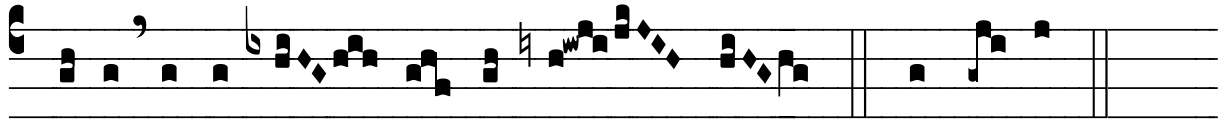
tas fá- ci- em tu- am a me; quó- ni- am trí- bu-



lor ex- áu- di me, De- us me- us. Ṽ. Intén-



de á- nimæ me- æ et lí- be- ra e- am, propter in- i- mí- cos



me- os é- ri- pe me Dó-mi- ne. * Quó- ni- am.