

R̄. Noli esse mihi

H 171					
Mode	8071	Rom1	0		
CAO	7219	Rom2	0		
C	G	B	E	M	V
H	R	D	F	S	L

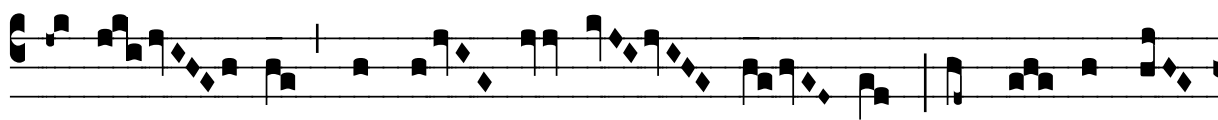
Jr 17, 18 V̄. Ps 69, 2



No-li esse mi-hi, Dó-mi-ne, a-li-é-



nus, par-ce mi-hi in di-e ma-la; confundán-



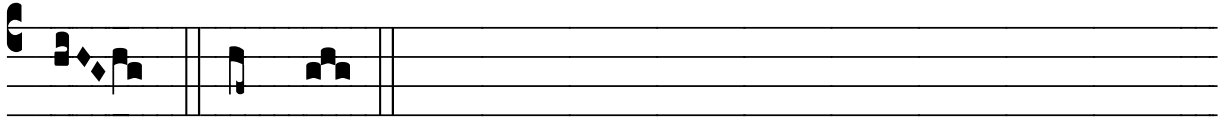
tur om-nes qui me per-se-quún-tur, et non confún-



dar e-go. V̄. Confundántur omnes in-i-mí-ci



me-i, qui quæ-runt á-nimam me-am ut áu-fe-rant e-



am. * Et non