


℞. Eram quasi agnus


H 180					
Mode	7065	Rom1	96r		
CAO	6660	Rom2	65v		
C	G	B	E	M	V
H	R	D	F	S	L

Jr 11, 19 ℞. Ps 40, 8-9

℞. VII
E Ram qua- si a- gnus ínno- cens : duc-




tus sum ad im- mo- lán- dum, et ne- sci- é- bam. Con-



sí- li- um fecé- runt in- imí- ci me- i advérsum me, di- cén-



tes : * Ve- ní- te, mit- támus lignum in panem e- jus, et con-

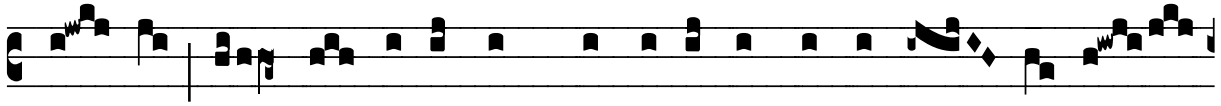


te- rá- mus e- um de ter- ra vi- vénti- um.

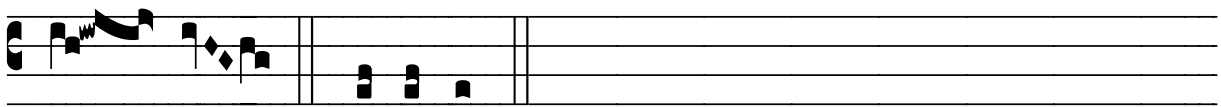




Ÿ. Om- nes in-imí- ci me- i advérsum me cogi- tábant ma- la



mi- hi, ver- bum in-íquum mandavé-runt advérsum me, di-



cén- tes. * Ve-ní- te.