
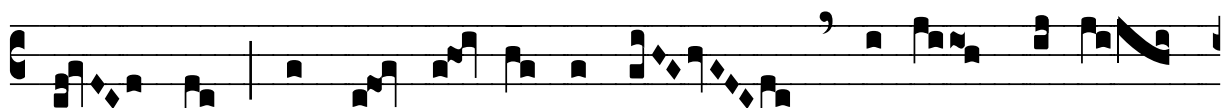
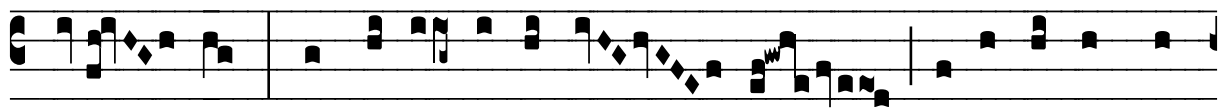


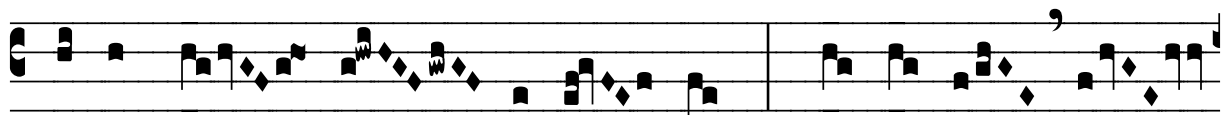
℞. Recessit pastor noster

H 223					
Mode	7069	Rom1		101r	
CAO	7509	Rom2		70v	
C	G	B	E	M	V
H	R	D	F	S	L

℞. VII  **R** Ecés- sit pastor no- ster, fons a- quæ

 vi- væ, ad cu- jus trans-i- tum sol obs- cu-rá-

 tus est ; nam et il- le captus est, qui captí-vum te-

 né-bat pri- mum hómi- nem, * Hó- di- e por-

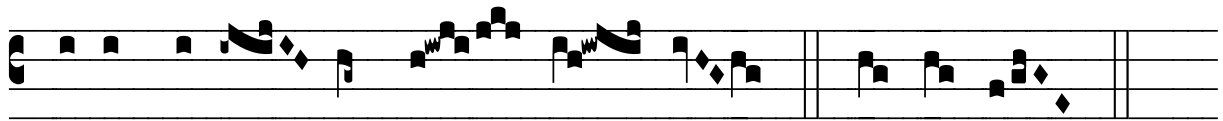
 tas mor- tis et se- ras pá- ri- ter Salvá- tor no- ster



dis- rú- pit. ✠ An- te cu-jus conspéctum mors fu-git,



ad cu-jus vocem mórtu- i resúr- gunt; vi- dén-tes autem e- um,



portæ mortis confrá- ctæ sunt. * Hó- di- e.