

# ℞. Maria Magdalena et altera Maria

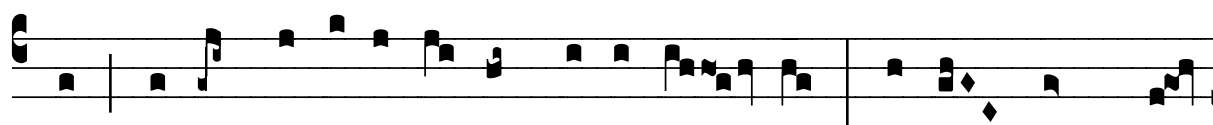
H 232					
Mode	7070	Rom1		106r	
CAO	7128	Rom2		78r	
C	G	B	E	M	V
H	R	D	F	S	L

Mt 28, 1.5.7 ℞. Id., 7

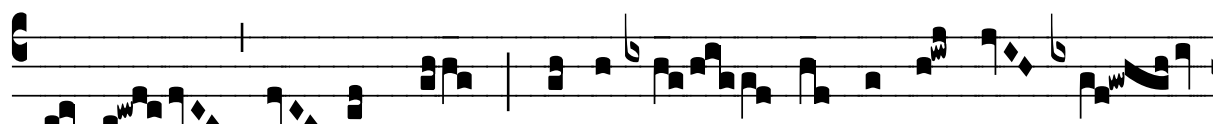
℞. VII



**M** A-rí- a Magda- lé- na et ál- te-ra Ma- rí-



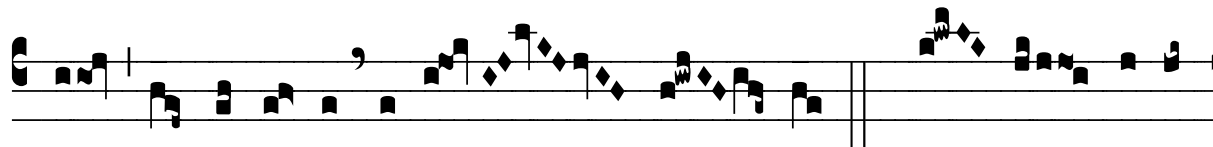
a i-bant di- lúcu- lo ad monumén- tum. Je- sum quem quári-



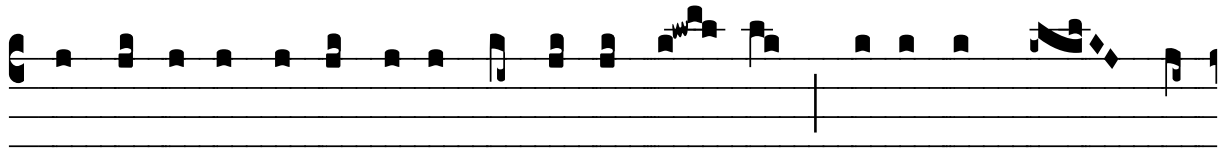
tis non est hic, surré- xit sic- ut lo- cú- tus



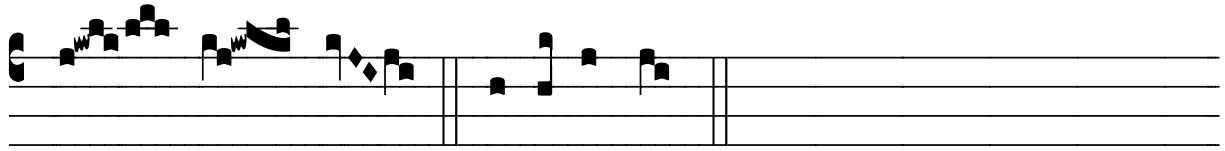
est, \* Præcédet vos in Ga- li- lée- am ; i- bi e- um vi- dé- bi-



tis, al- le- lú- ia, alle- lú- ia. ℞. Ci- to e- ún-



tes dí-ci- te discí- pu-lis e- jus et Pe- tro, qui- a sur- ré- xit



Dó- mi- nus. \* Præcédet vos.