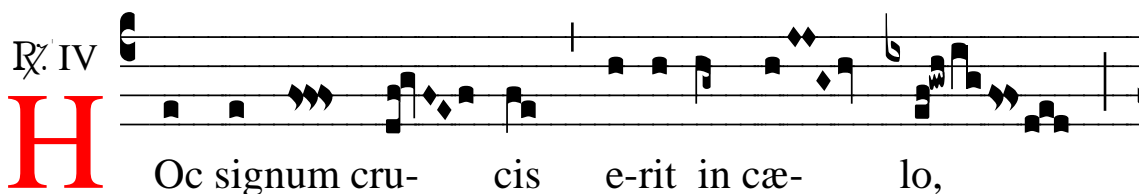


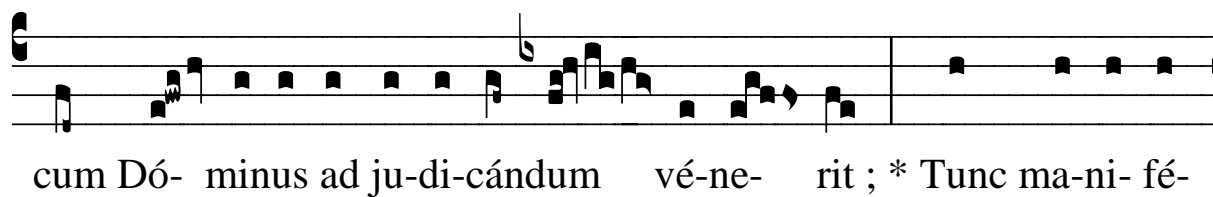
# ℞. Hoc signum crucis

H 255					
Mode	4045	Rom1	117r		
CAO	6845	Rom2	90v		
C		B	E	M	V
H	R	D	F	S	L

℞. IV  
**H** Oc signum cru- cis e-rit in cæ- lo,



cum Dó- minus ad ju-di-cándum vé-ne- rit ; \* Tunc ma-ni- fé-



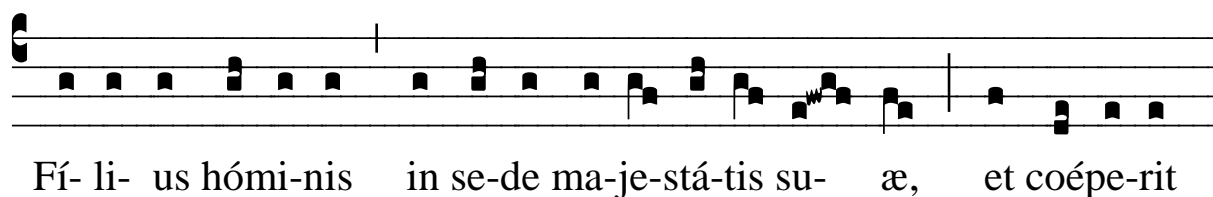
sta e- runt abscón- di- ta cor- dis no- stri, al-

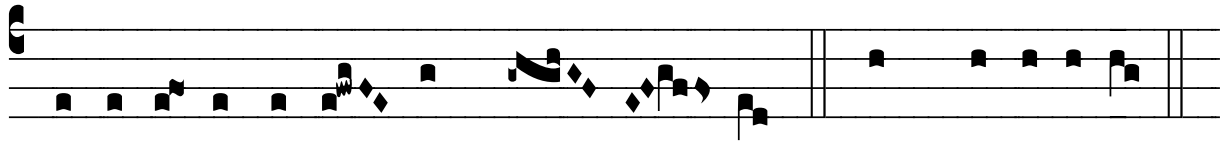


le-lú- ia, alle- lú- ia. √. Cum séde- rit



Fí- li- us hómi- nis in se- de ma- je- stá- tis su- æ, et coépe- rit





ju-di-cá-re sáecu-lum per i-gnem. \* Tunc ma-ni-fésta.