

# ℞. Non conturbetur...assumptus

H 263					
Mode	3040	Rom1	0		
CAO	7225	Rom2	0		
C	G	B	E	M	V
H	R	D	F	S	L

Jo 14, 1; 15, 26; 16, 28 ℞. Id., 16, 7

℞. III  
**N** On contur-bé-tur cor ve- strum: E- go vado



ad Pa- trem; et dum assúptus fú- e-ro a vo- bis mit-



tam vobis, al-le-lú- ia, Spí- ri- tum ve- ri- tá- tis,

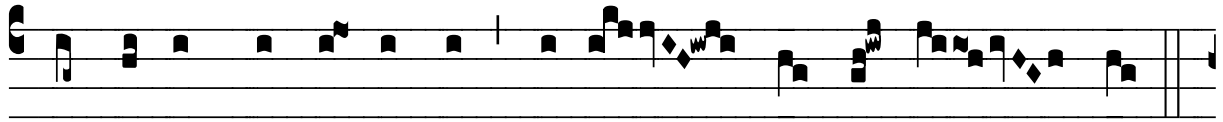


et gaudé- bit cor vestrum, al- le- lú-

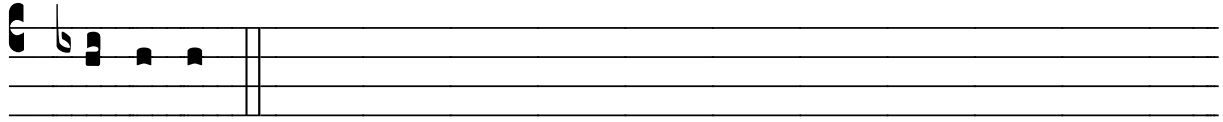


ia. ℞. Ni- si e-go ab-í- e-ro, Pará- cli- tus non véni- et,





dum assúptus fú- e- ro, mit-tam vo- bis e- um.



\* Spí- ri- tum.