

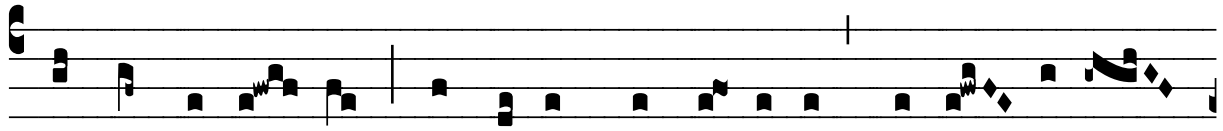
R̄. Tempus est ut revertar...misit me

H 264					
Mode	4048	Rom1	0		
CAO	7758	Rom2	0		
C	G	B	E	M	V
H	R	D	F	S	L

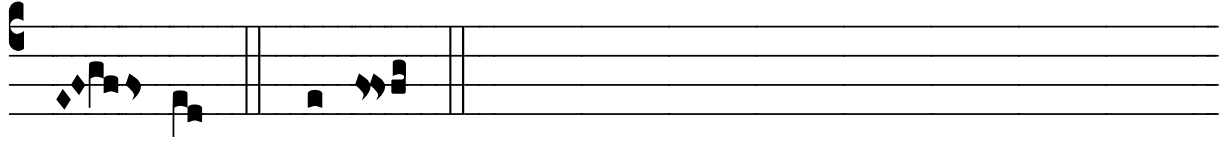
Tob 12, 20; Jo 14, 1; *Id.*, 17, 9 *Ÿ*. *Id.*, 16, 7

R̄. IV

T Empus est ut re-vér-tar ad e- um qui mi-
sit me, di- cit Dómi- nus ; no-lí- te con-tri-stári
nec tur-bé- tur cor ve- strum * Ro-go pro vo-bis Pa-
trem, ut il-le vos custó-di- at, al-le-lú- ia, al-le-
lú- ia. *Ÿ*. Ni- si e-go ab-í- e-ro, Pa-rácli-



tus non vé-ni- et ; dum assúptus fú- e-ro, mit-tam vobis



e- um. * Rogo.