


R̃. Domine si tu es

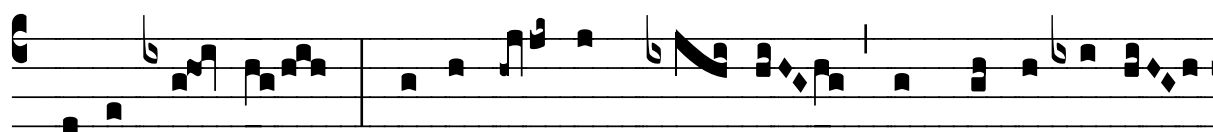
H 281					
Mode	8093	Rom1	135r		
CAO	6515	Rom2	103v		
C		B	E	M	V
H	R	D	F	S	L

Mt 14, 28.31 Ṽ. Id., 30

R̃. VIII




D O-mi-ne, si tu es, jube me ve-ní-re ad te



super a-quas. * Et extén-dens ma-num appre-héndit e-



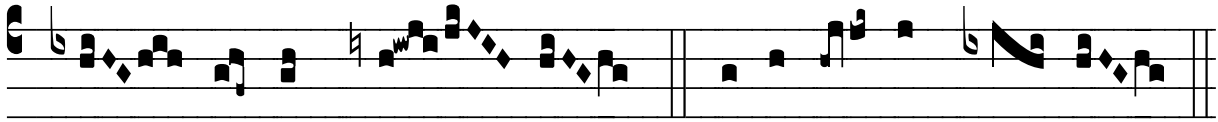
um, et di-xit Je-sus : Mó-di-ce fí-de-i, qua-re du-bi-



tá-sti. Ṽ. Cumque vi-dísset ventum vá-li-dum ve-ni-éntem tí-



mu-it, et cum cœ-pís-set mer-gi cla-má-bat di-cens : Dómi-



ne, sal-vum me fac. * Et extén-dens ma- num.