

℞. Qui regni claves

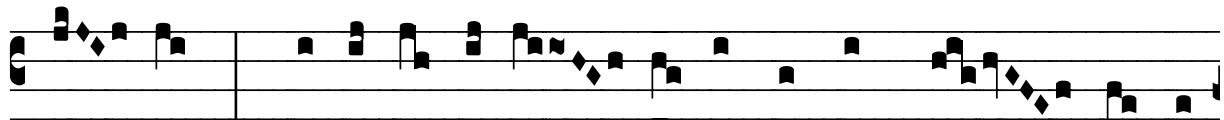
H 283					
Mode	7096	Rom1	134v		
CAO	7483	Rom2	105v		
C			E		V
H	R	D	F	S	L

℣. Mt 16, 19

℞. VII

Q

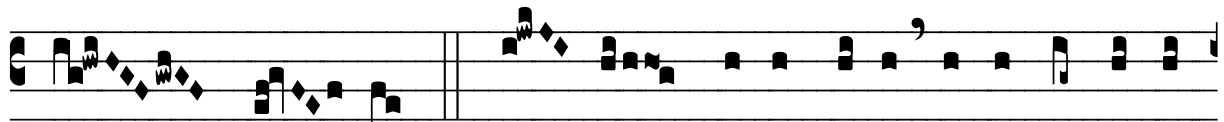
Ui re-gni cla- ves et cu-ram trá-di-dit o-



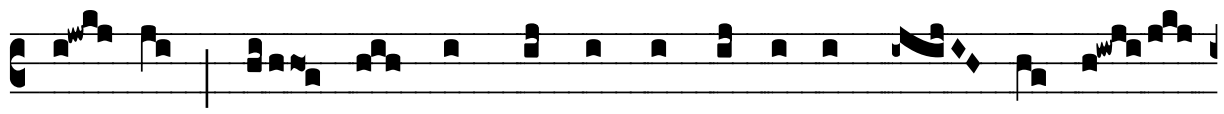
vi- lis, * Qui cæ- li terræ- que Pe- tri commí- sit ha-



bé- nas, ut ré- se- ret clau- sis et sol- vat vin- cla



li- gá- tis. ℣. I- pse tu- a, Petre, jussit víncu- la



so- lvi, qui te mun- dá- nos constí- tu- it sól- ve- re

