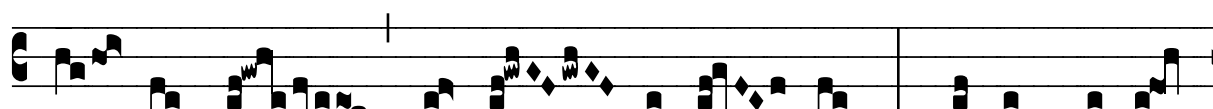


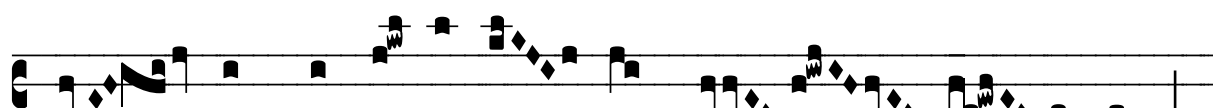
℞. Isti sunt duae olivae candelabra


H 283					
Mode	7097	Rom1	135v		
CAO	7014	Rom2	106r		
C		B	E	M	V
H	R	D		S	L

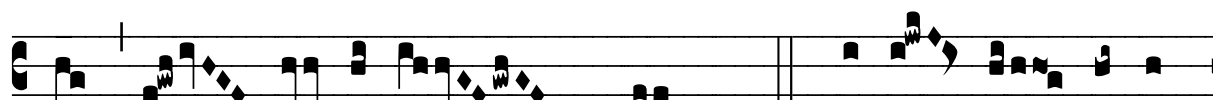
Apc 11, 4.6 Ƿ Ps 18, 5

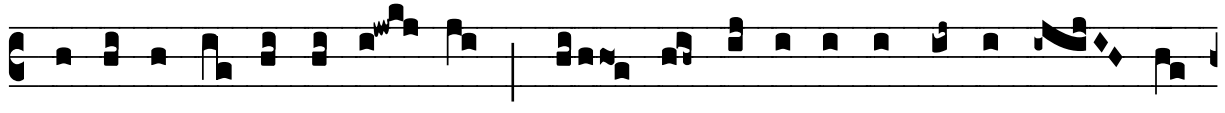
℞. VII **I** 
 Sti sunt du- æ o- lí- væ cande- lá- bra lu-


 cén- ti- a an-te Dómi- num ; ha-bent pot-e-


 tá- tem claudé- re cæ- lum nú- bi- bus


 et ape-rí- re portas e- jus, * Qui- a linguæ e- ó-


 rum cla- ves cæ-li factæ sunt. Ƿ. In om- nem terram



ex-í-vit so-nus e- ó- rum, et in fi-nes orbis terræ ver- ba



e- ó- rum. * Qui- a linguæ.