

℞. Felix namque es

H 307					
Mode	1069	Rom1	0		
CAO	6725	Rom2	0		
		B	E	M	V
H	R		F	S	L

℞. I
F E-lix namque es, sacra vir-go Ma- rí- a,

et omni lau- de dignís- si- ma ; * Qui- a

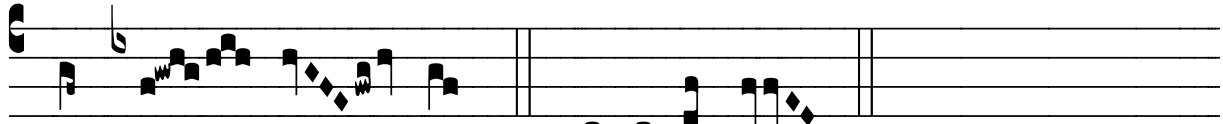
ex te ortus est sol justí- ti- æ, Chri- stus

De- us no- ster. √ O- ra pro pópu- lo, intervé- ni pro

cle- ro, inter- cé- de pro de- vó- to femí- ne- o se- xu, sén-



ti- ant om- nes tu- um le- vá- men qui- cúmque cé-lebrant tu-



um na- tá- lem. * Qui- a ex te.