

# R̄. Stetit angelus

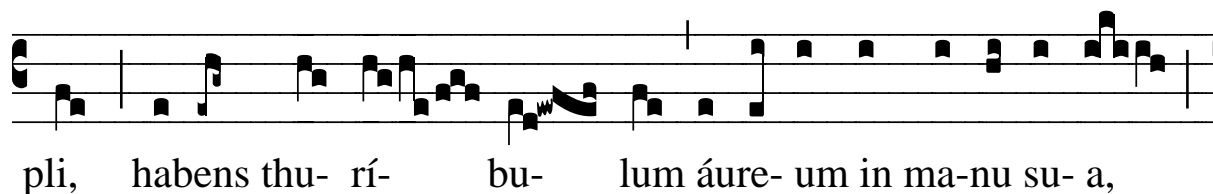
H 313					
Mode	7102	Rom1	0		
CAO	7707	Rom2	0		
C		B	E	M	V
H	R	D	F		L

Ap 8, 3 V̄. Ps 137, 1-2

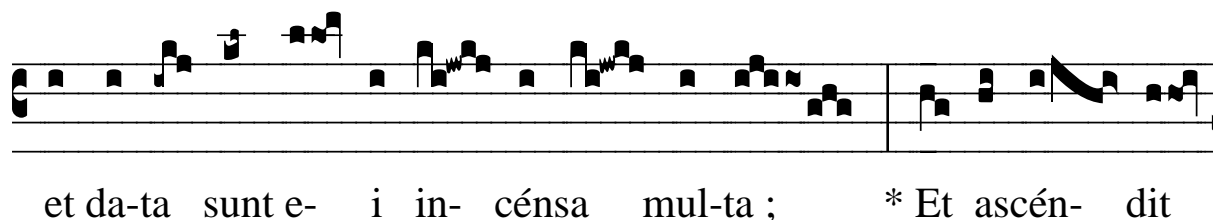
R̄. VII **S** Te- tit ánge- lus juxta a- ram tem-



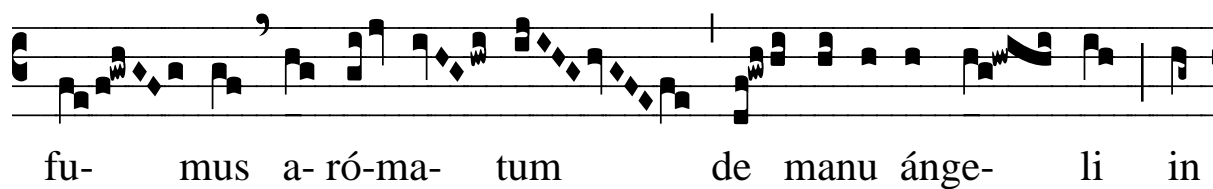
pli, habens thu- rí- bu- lum áure- um in ma-nu su- a,



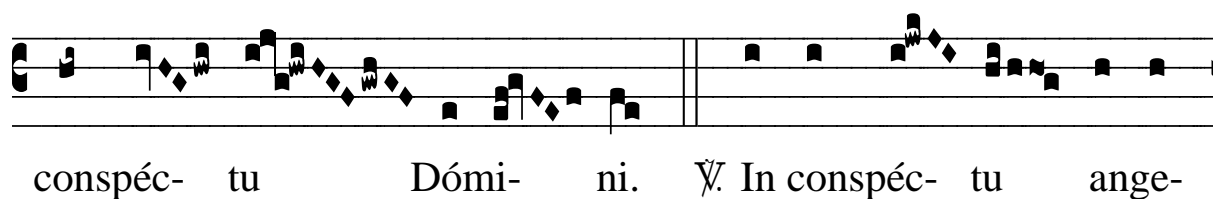
et da-ta sunt e- i in- cénsa mul-ta ; \* Et ascén- dit

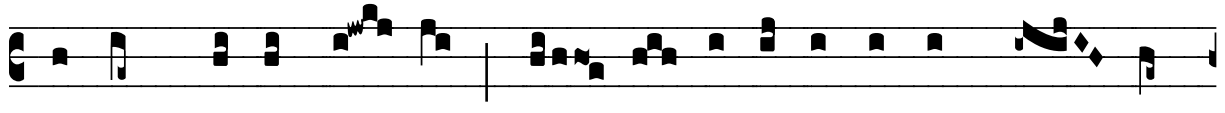


fu- mus a-ró-ma- tum de manu ánge- li in



conspéc- tu Dómi- ni. V̄. In conspéc- tu ange-





ló-rum psal-lam ti- bi, et ad- o-rá-bo ad templum sanc-



tum tu- um. \* Et ascén- dit.