

# ℞. Martinus Abrahae sinu

H 338					
Mode	1077	Rom1	168v		
CAO	7132	Rom2	137v		
C		B	E	M	V
H	R	D	F	S	L

℞. I

**M** Artí-nus A-bra- hæ si- nu læ-tus

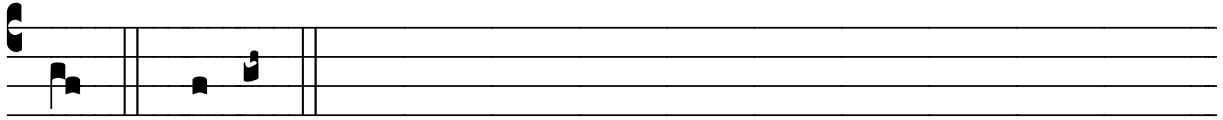
ex cí- pi- tur ; Martí- nus, hic pau- per et mó- di-

cus \* Cæ- lum di- ves ingré- di- tur, hymnis cæ- lé- sti- bus

hono- rá- tur. √. Martí- nus e- pí- scopus migrá- vit

a sǣ- cu- lo ; vi- vit in Christo gemma sa- cer- dó-

The image shows five staves of musical notation in square neumes on a four-line red staff. The notation is in a medieval style, with various note values and rests. The lyrics are written below the staves, with a large red initial 'M' at the beginning of the first line. The text is in Latin and Old English, describing the life of St. Martin of Tours.



tum. \* Cæ-lum.