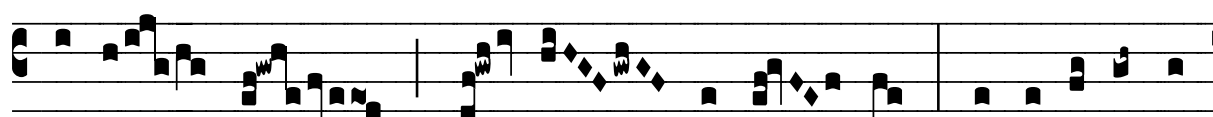


℞. Ecce ego mitto vos

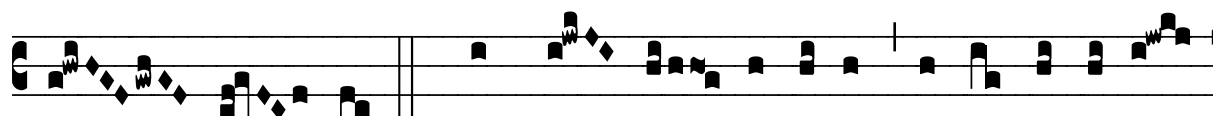
H 360					
Mode	7113	Rom1	175r		
CAO	6588	Rom2	143v		
C			E	M	V
H	R	D	F	S	L

Mt 10, 10 √ Jo 12, 36

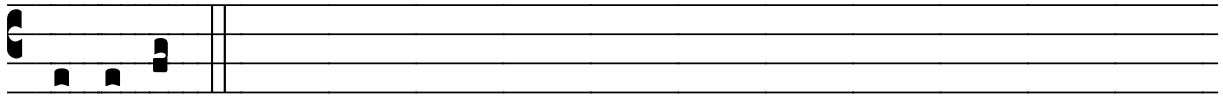
℞. VII 
E Cce ego mit-to vos sic-ut o- ves in mé- di- o


 lupó- rum, di- cit Dómi- nus, * Estó-te ergo


 prudéntes sic-ut ser- pén- tes, et sím- pli- ces sic- ut


 co- lúm- bæ. √ Dum lu- cem ha- bé- tis cré- di- te in lu-


 cem, ut fí- li- i lu- cis si- tis, di- cit Dó- mi- nus.



* Estó-te.