

℞. Fuerunt sine querela

H 362					
Mode	2070	Rom1	0		
CAO	6748	Rom2	0		
C			E	M	V
H	R	D	F	S	L

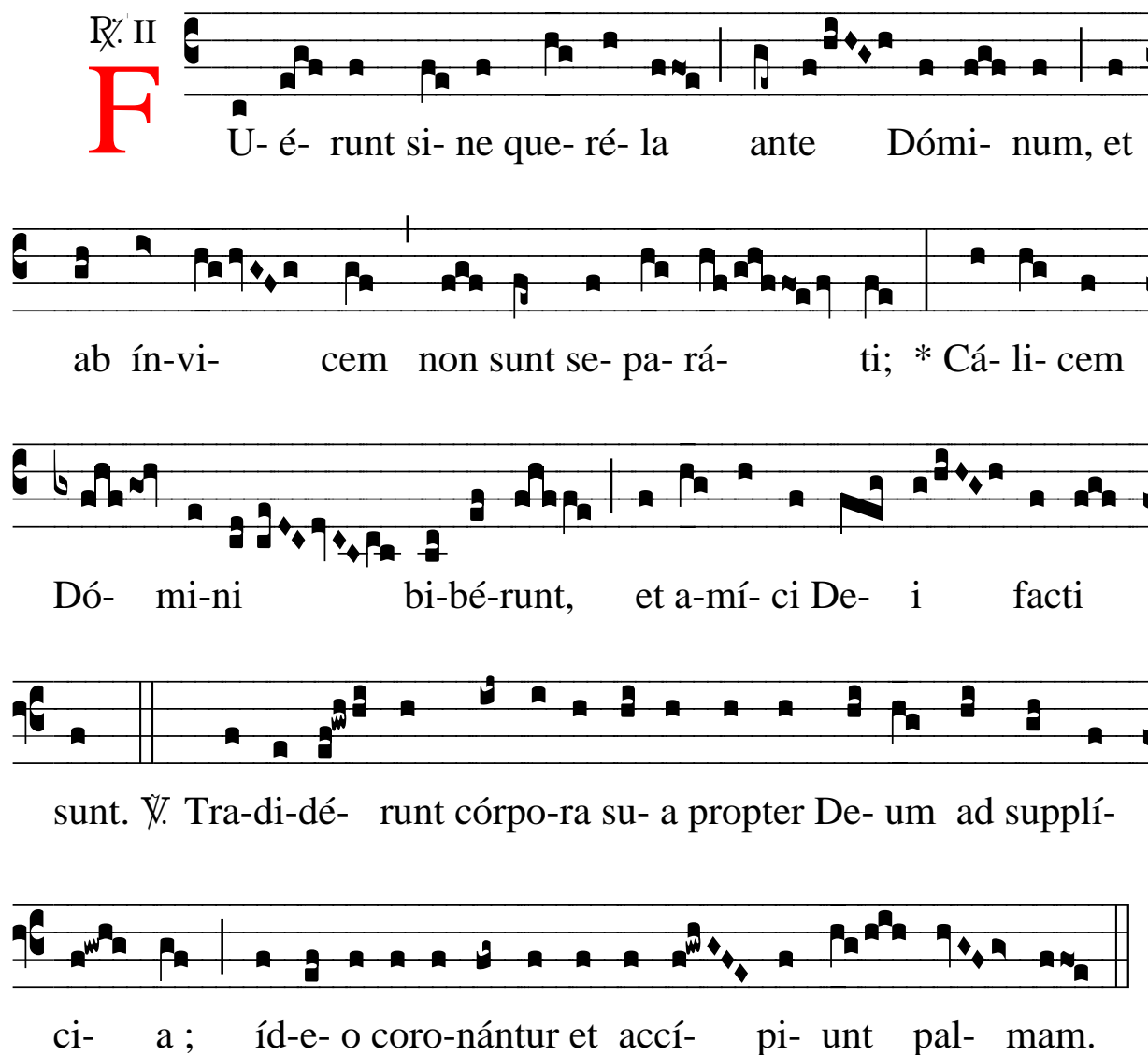
℞. II
F U- é- runt si- ne que- ré- la ante Dómi- num, et

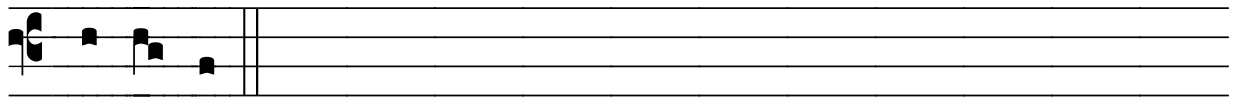
ab ín-vi- cem non sunt se- pa- rá- ti; * Cá- li- cem

Dó- mi-ni bi-bé-runt, et a-mí- ci De- i facti

sunt. √ Tra-di-dé- runt córpo-ra su- a propter De- um ad supplí-

ci- a ; íd-e- o coro-nántur et accí- pi- unt pal- mam.

The image shows a musical score for a Latin text. It consists of five staves of music, each with a corresponding line of text underneath. The first staff begins with a red 'F' and the text 'U- é- runt si- ne que- ré- la ante Dómi- num, et'. The second staff continues with 'ab ín-vi- cem non sunt se- pa- rá- ti; * Cá- li- cem'. The third staff has 'Dó- mi-ni bi-bé-runt, et a-mí- ci De- i facti'. The fourth staff has 'sunt. √ Tra-di-dé- runt córpo-ra su- a propter De- um ad supplí-'. The fifth staff has 'ci- a ; íd-e- o coro-nántur et accí- pi- unt pal- mam.' The music is written in a style that uses square notes and stems, typical of early printed music notation. The text is in a Gothic-style font.



* Cá- li- cem.