

℞. Iste sanctus pro lege

H 372

Mode	5042	Rom1	179v		
CAO	7010	Rom2	146v		
C		E	M	V	
H	R	D	F	S	L

℞. V

I



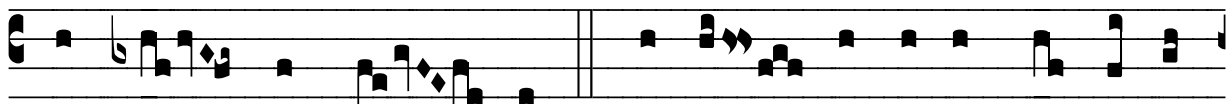
Ste san- ctus pro le-ge De- i su- i cer- tá-



vit usque ad mor- tem, et a ver-bis impi- ó-



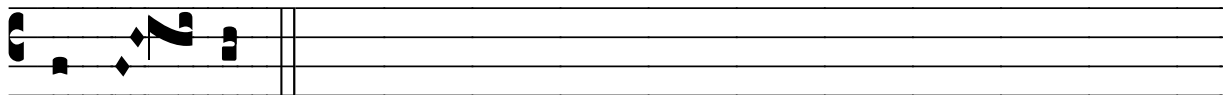
rum non tímu- it: * Fundá-tus e- nim e- rat su-



pra fir- mam pe- tram. √. Iste est qui contémpsit vi- tam



mun- di, et pervé-nit ad cæ-lé- sti- a re- gna. * Fundá-



tus e- nim.