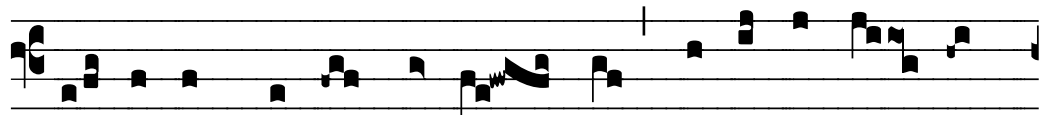


# ℞. Dominus qui elegit te

H 379

Mode	2073	Rom1	0
CAO	6523	Rom2	0
C		E	
H	R		

℞. II  
**D**



O-mi-nus qui e- lé-git te, ipse te co- ro-



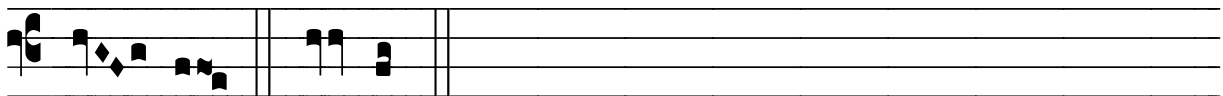
ná- vit co-ró- na ju- stí- ti- æ ; \* Vi- a e-



nim Dómi-ni rec- ta facta est co-ram te. ℞ Vi- a



justó-rum recta facta est , et i- ter sanctó-rum præ- pa-rá-



tum est. \* Vi- a.