

R̄. Specie tua

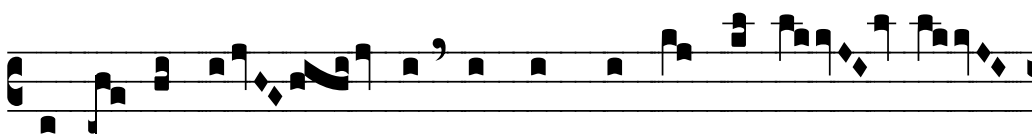
H 384

Mode	7127	Rom1	0
CAO	7680	Rom2	0
C		E	
H	R	F	L

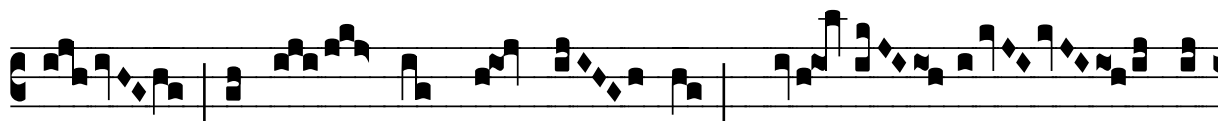
Ps 44, 5 Ṽ. Id., 3

R̄. VII

S



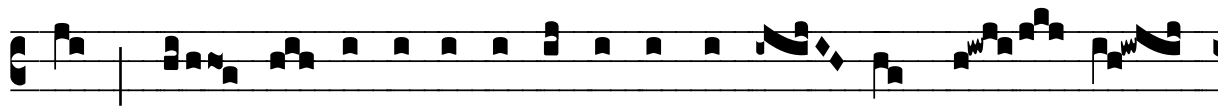
Pé-ci- e tu- a et pulchri- tú- di-ne tu-



a, intén- de pró- spe- re * Pro- cé-



de et re- gna. Ṽ. Diffú- sa est grá-ti- a in lá- bi- is tu-



is, prop- tér- e- a be-ne-dí-xit te De- us in æ- tér-



num. * Pro- cé-de.