

R̃. Magna enim sunt iudicia

| | | | | | |
|-------|------|------|------|---|---|
| H 400 | | | | | |
| Mode | 3061 | Rom1 | 143v | | |
| CAO | 7113 | Rom2 | 113r | | |
| C | | B | E | M | V |
| H | R | D | F | S | L |

Sap 17, 1; 19, 20 Ṽ. Ps 76, 21



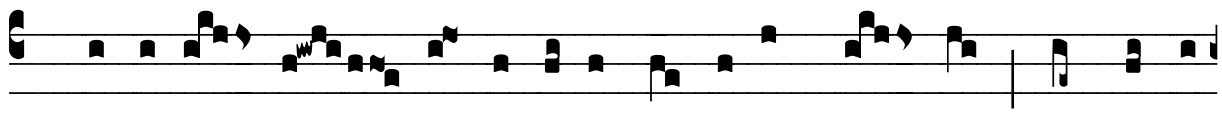
Magna e- nim sunt ju-dí-ci- a tu- a, Dó- mi-



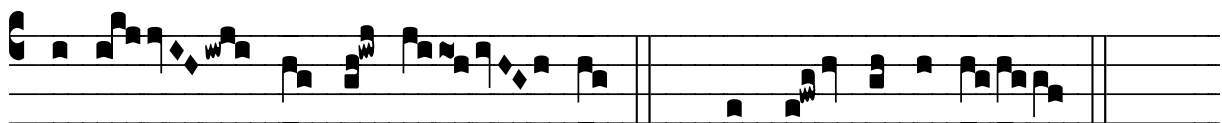
ne, et in-e-narra-bí-li- a ver- ba tu- a ; * Magni- fi-



cásti pó- pu-lum tu- um et ho- no- rá- sti.



Ṽ. De-duxí- sti sic- ut oves pó- pu-lum tu- um in ma-nu



Mó- y- si et Aa- ron. Ṽ. Magni- fi-cásti.