


℞. Ne derelinquas me Domine


H 400					
Mode	4085	Rom1	142v		
CAO	7204	Rom2	113r		
C		B	E	M	V
H	R	D	F	S	L

Sir 23, 2.1.3 ℞. Ps 34, 2

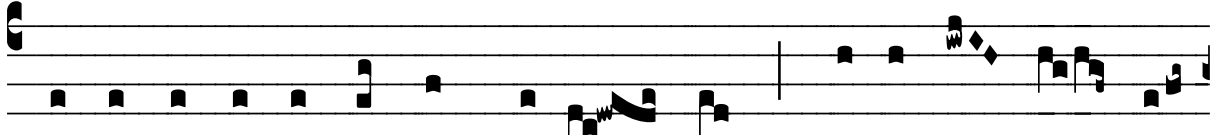
℞. IV




N E de-re- línquas me, Dómi-ne, pa-ter et



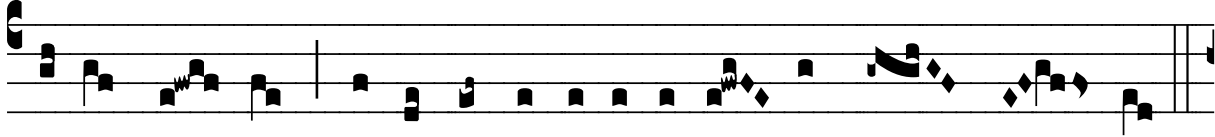
domi-ná- tor vi- tæ me- æ, ut non cór-ru- am in conspéc-



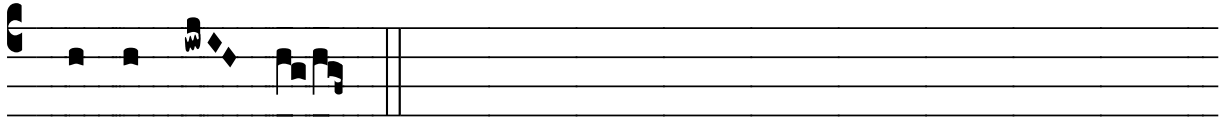
tu adver-sa- ri- ó- rum me- ó- rum, * Ne gáude- at de



me in- i- mí- cus me- us. ℞. Appre- hénde ar-



ma et scu- tum, et exsúrge in adju- tó- ri- um me- um.



* Ne gáude- at.