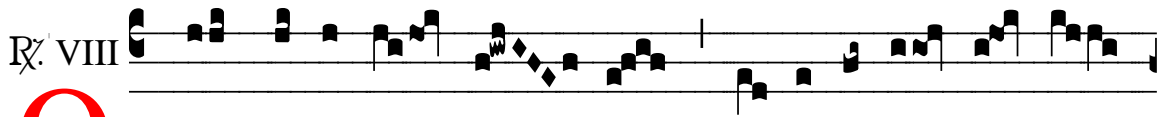


# R̃. Quis mihi tribuat

H 404					
Mode	8140	Rom1	0		
CAO	7501	Rom2	0		
C	G	B	E		V
H	R	D	F		L

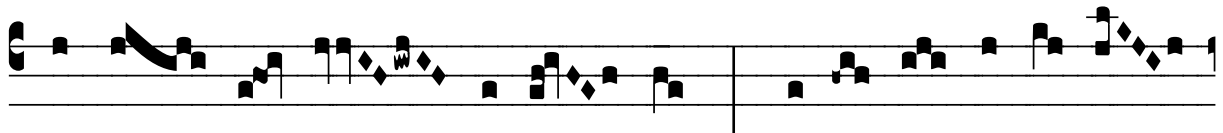
Job 14, 13 *ŷ.* Id., 10, 5



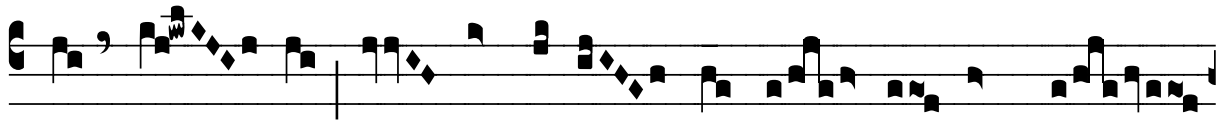
**Q** Uis mi-hi trí- bu- at ut in infér- no pró-



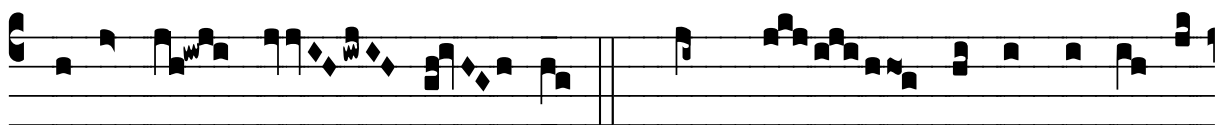
te- gas me et abscondas me, do- nec pertráns- e-



at fu- ror tuus, Dómi- ne, \* Ni-si tu qui so- lus



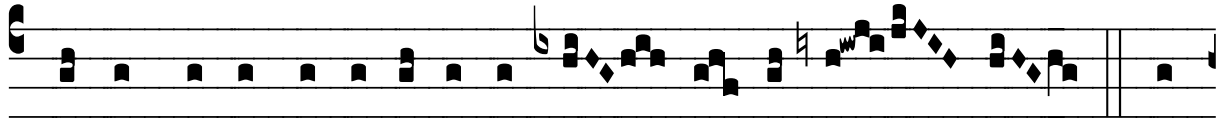
es, De- us ? et constí-tu- as tem- pus in quo



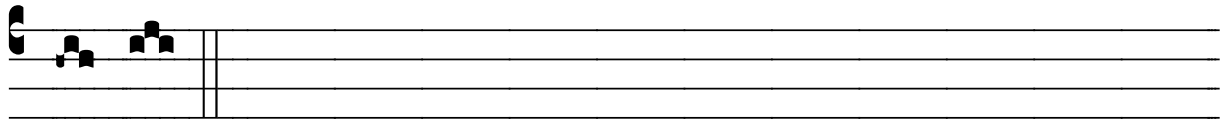
recórde- ris me- i ? *ŷ.* Numquid sic-ut di- es hó-



mi-nis di- es tu- i, ut quæras in- i-qui- tá-tem me- um, cum sit



nemo qui de ma-nu tu- a pos-sit e- rú- e- re. \* Ni-



si tu.