

# ℞. Inclinars faciem meam

H 406					
Mode	2080	Rom1	154r		
CAO	6947	Rom2	123r		
		B	E		V
H	R	D	F		

℣. Job 6, 11

℞. II

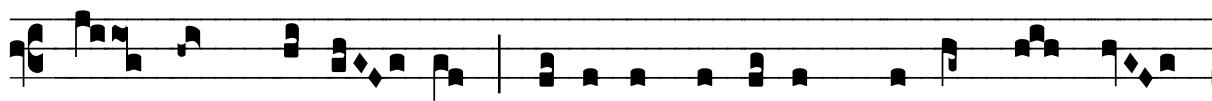
**I**



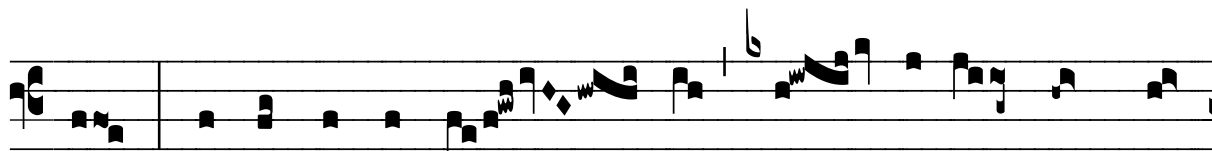
Nclí- nans fá-ci- em me- am in- ge- mí-



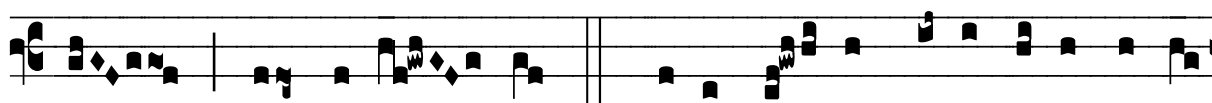
sco, commo- vé- bor ómni- bus membris me- is ; sci- o



e- nim, Dómi- ne, qui- a impu- ní- tum me non di- mít-



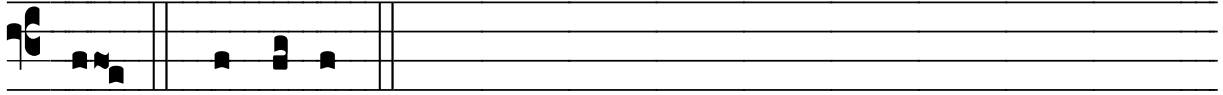
tis ; \* Et si sum ímpi- us, qua- re non sum mór-



tuus sed lábo- ro. ℣. Quæ est e- nim forti- túdo me- a



ut sustí-ne- am, aut quis fi-nis me- us ut pa-ti- énter a-



gam. \* Et si sum.