

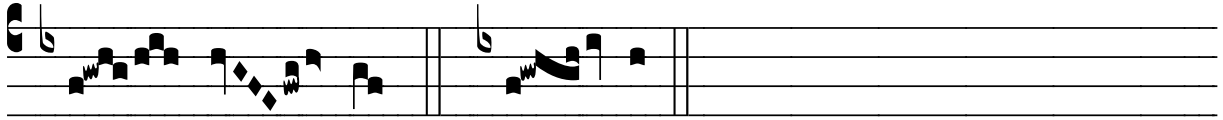
℞. Aspice Domine quia facta est

H 416					
Mode	1107	Rom1		165r	
CAO	6127	Rom2		134v	
C	G	B	E	M	V
H	R	D	F	S	L

Lam 1, 1-2

℞. I

A Spi- ce, Dó- mi- ne, qui- a fac- ta est de-
so- lá-ta cí-vi- tas ple- na di- ví- tiis, se- det in
tristí- ti- a dó- mi- na génti- um ; * Non est qui con-
so- lé- tur e- am, ni- si tu, De- us. ̄. Plo-
rans plo- rá- vit in noc- te, et lá- crimæ e- jus in ma- xíl-



lis e- jus. * Non est.