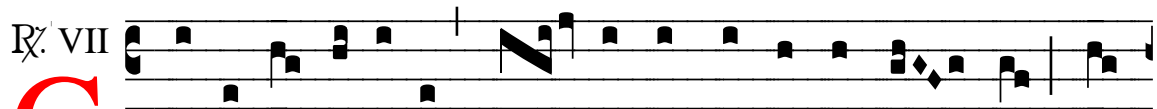


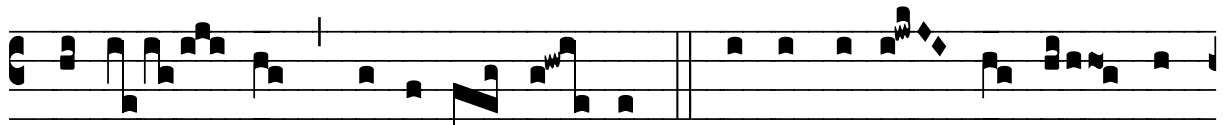
℞. Genti peccatrici

| | | | | | |
|-------|------|------|------|---|---|
| H 418 | | | | | |
| Mode | 7138 | Rom1 | 0 | | |
| CAO | 6768 | Rom2 | 136r | | |
| | G | B | | M | V |
| H | R | D | F | S | L |

Is 1, 4 √ Ex 32, 12



G Enti peccatrí-ci, pó- pu- lo ple-no peccá- to, mi-



se-ré- re, * Dómi-ne, De- us. √ Esto placá- bi- lis su-



per nequí-ti- a pó-pu- li tu- i. * Dómi-ne De- us.